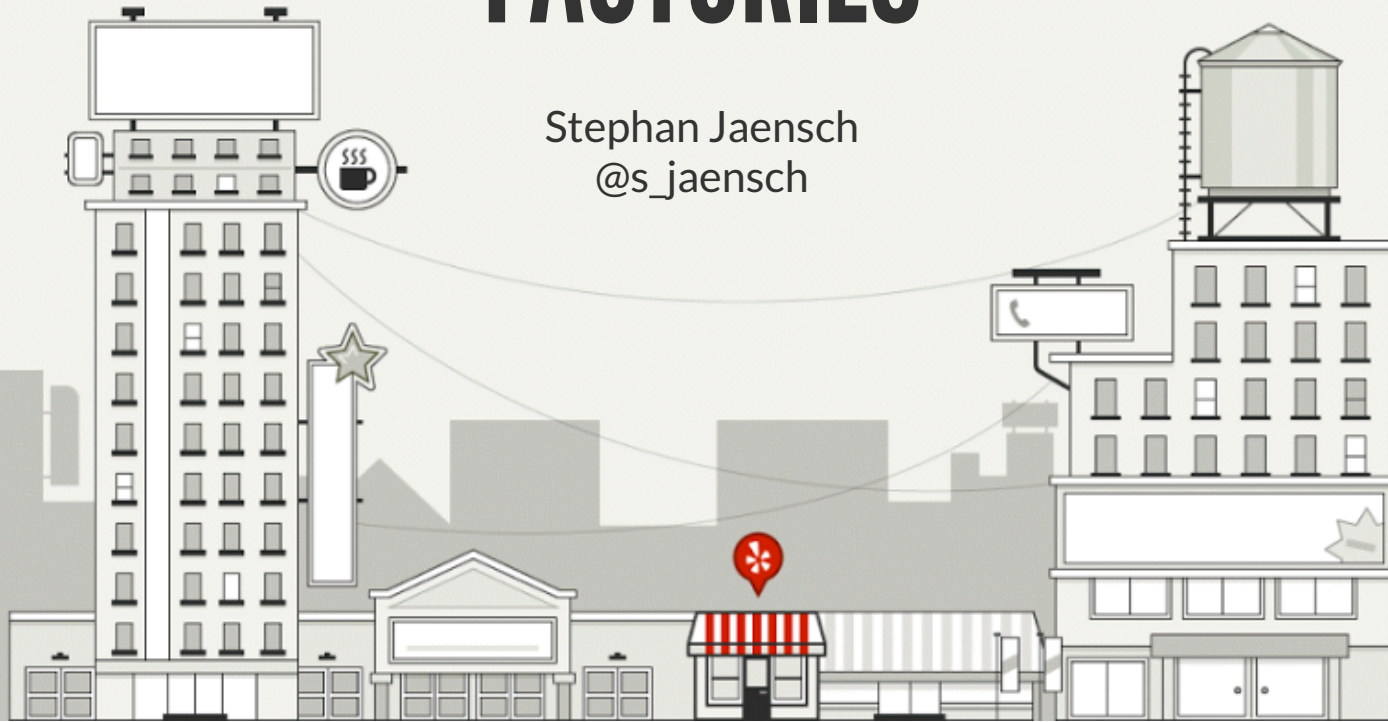


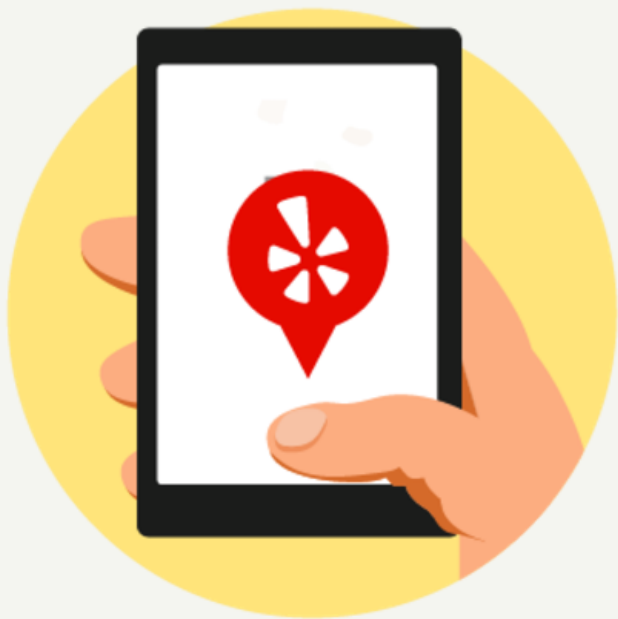
# FASTER END-TO-END TESTS WITH FIXTURE FACTORIES

Stephan Jaensch  
@s\_jaensch



# YELP'S MISSION

To connect people to great local businesses





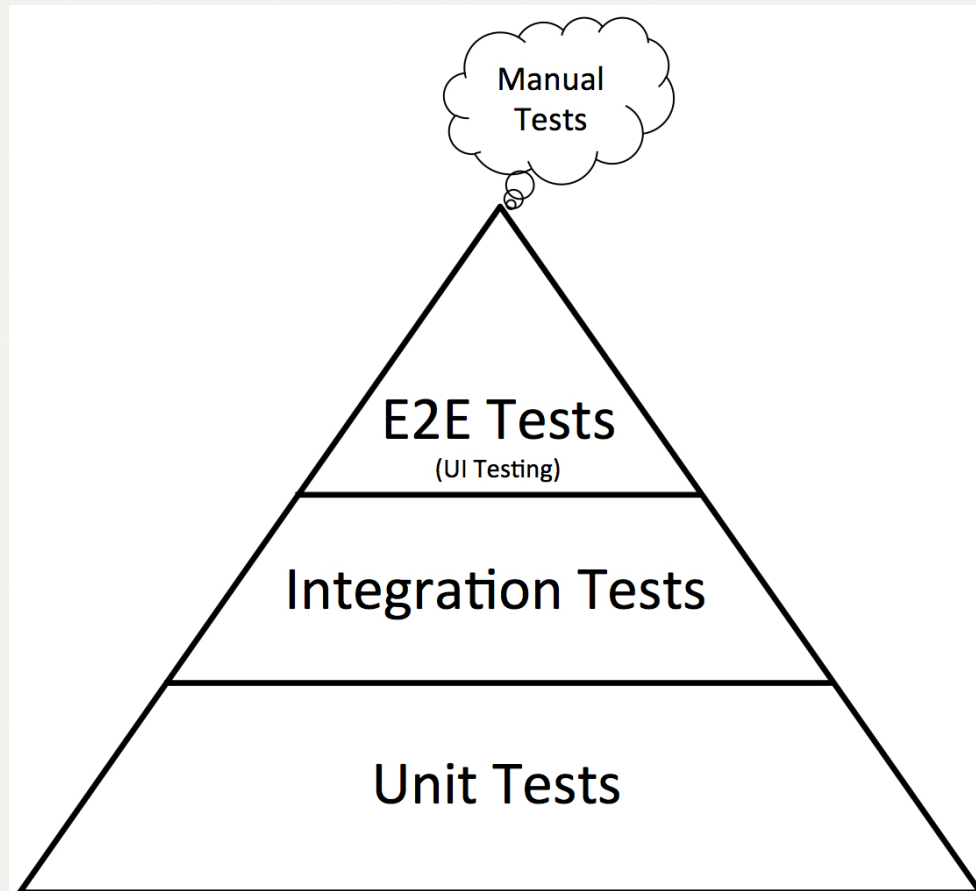
# WHAT I'LL TALK ABOUT

- What are end-to-end tests?
- The problem with setting up end-to-end tests
- How do fixture (or data) factories help solve the problem?
- How can we make tests faster?





# END-TO-END TESTS - THE WHAT AND WHY



Source: [https://www.ministryoftesting.com/wp-content/uploads/2014/10/typical\\_pyramid.jpg](https://www.ministryoftesting.com/wp-content/uploads/2014/10/typical_pyramid.jpg)



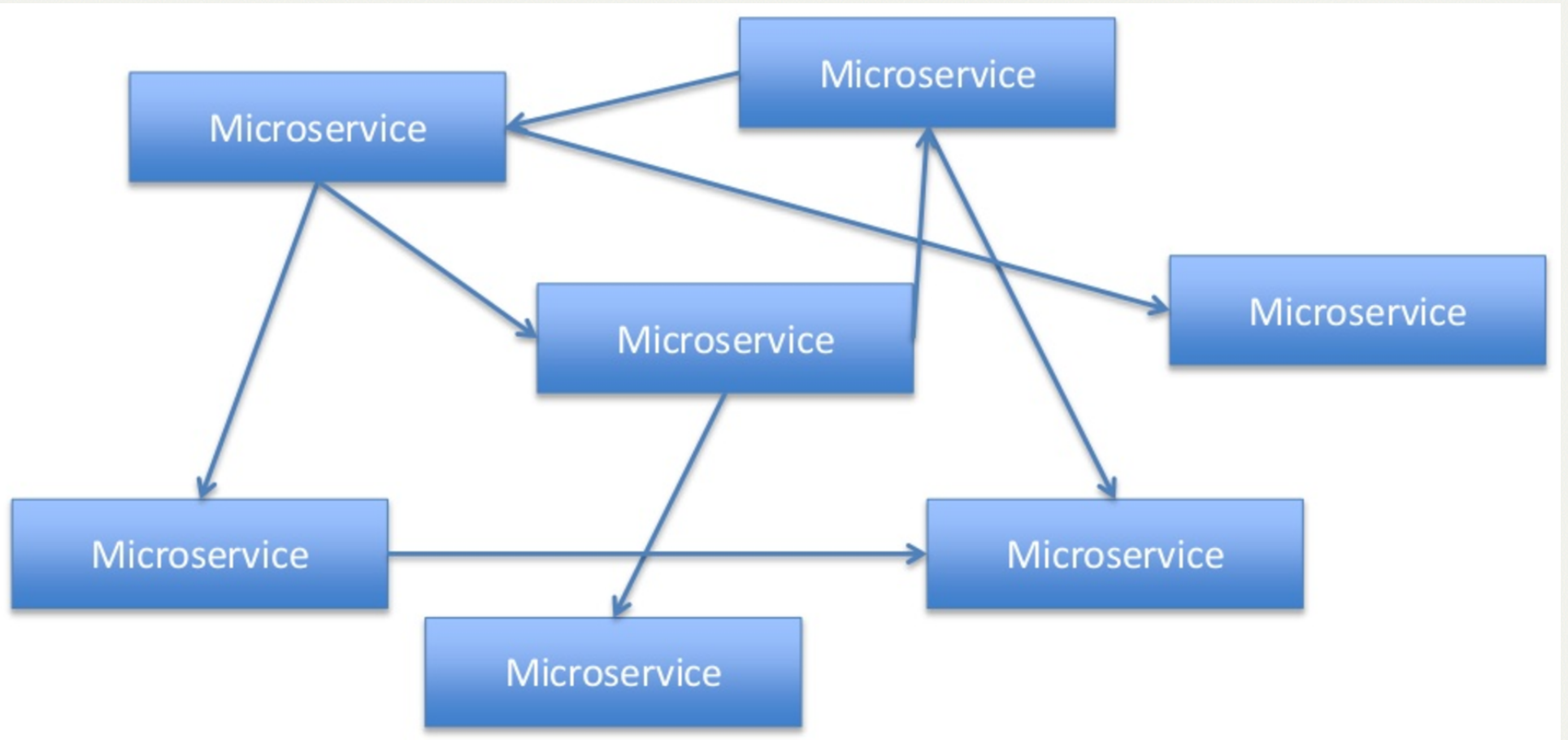


# OUR SERVICE TECHNOLOGY STACK





# WHAT'S HARD ABOUT E2E TESTS?



Source: <https://www.slideshare.net/danveloper/microservices-the-right-way>



# CREATING E2E TEST STATE

```
-- Some businesses used in promo tests
INSERT INTO `business` (`id`, `name`, `address1`,
INSERT INTO `business_alias` (id, alias, business_
INSERT INTO `business_payment_account_entity` (id,
INSERT INTO `biz_user_business` (id, biz_user_id,
-- Data for test_get_reasons_for_flagging: one non
INSERT INTO `business` (`id`, `name`, `address1`,
INSERT INTO `business_alias` (id, alias, business_
INSERT INTO `biz_user_business` (id, biz_user_id,
```

Lots of SQL statements...





# TAKING INSPIRATION FROM DJANGO

```
from myapp.models import Animal

class AnimalTestCase(TestCase):
    def setUp(self):
        Animal.objects.create(name="lion", sound="roar")
        Animal.objects.create(name="cat", sound="meow")
```

...but for downstream services as well

...and without code duplication





# TESTING FACTORY LIBRARIES

- [python packages-biz claims models](#)
- [python packages-ee metrics models](#)

- Contain SQLAlchemy models as well as factory functions
- Factories provide a slightly higher level of abstraction
- Take care of common default values
- Make sure data is logically correct





# TEST - BEFORE

```
def test_get_answer_list_empty_list(testapp):
    response = testapp.get(
        '/business/{business_id}/question/'
        '{question_id}/answer/v1'.format(
            business_id=encrypt_id(3),
            question_id=encrypt_id(2),
        ),
        params={
            'limit': LIMIT,
            'offset': OFFSET,
        },
    )

    assert response.json == {...}
```





# TEST - AFTER

```
def test_get_answer_list_empty_list(testapp, question, business_id):
    response = testapp.get(
        '/business/{business_id}/question/'
        '{question_id}/answer/v1'.format(
            business_id=encrypt_id(business_id),
            question_id=encrypt_id(question.id),
        ),
        params={
            'limit': LIMIT,
            'offset': OFFSET,
        },
    )

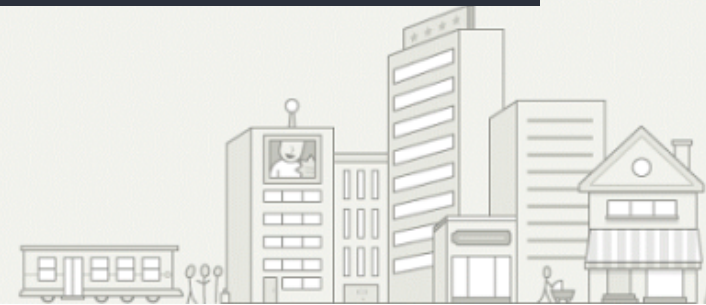
    assert response.json == {...}
```



# THE BUSINESS FIXTURE

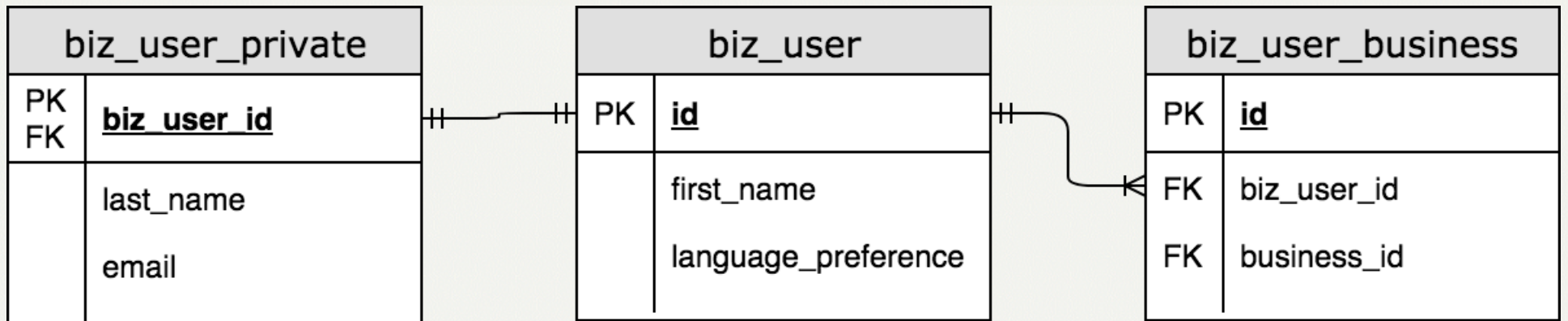
```
@pytest.fixture
def business_id(db_session):
    return business_factory.create(db_session)
```

```
def create(
    session,
    name='Levchins',
    ...
):
    business = Business(
        name=name,
        ...
    )
    session.add(business)
    session.commit()
    return business.id
```





# WHY NOT USE MODELS DIRECTLY?



# WHY NOT USE MODELS DIRECTLY?

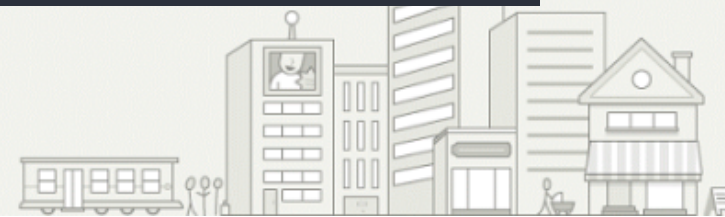
```
def biz_user_create(session, business_id=None, email=None, ...):
    """Creates a biz_user with password 'password'"""
    biz_user = BizUser(
        ...
    )
    session.add(biz_user)
    session.flush()

    session.add(
        BizUserPrivate(
            biz_user_id=biz_user.id,
            email=email,
        )
    )

    if business_id:
        add_biz_user_to_business(session, biz_user.id, business_id)

    session.commit()

    return biz_user.id
```





# DOWNSTREAM SERVICES WITH DATA CREATION APIS

```
@pytest.fixture
def question(question_answer_client, business_id, confirmed_user_id):
    return question_answer_client.business.create_question(
        body={
            'text': 'Test question...?',
            'platform_source': 'other',
            'subscription': False,
        },
        business_id=business_id,
    ).result().question
```





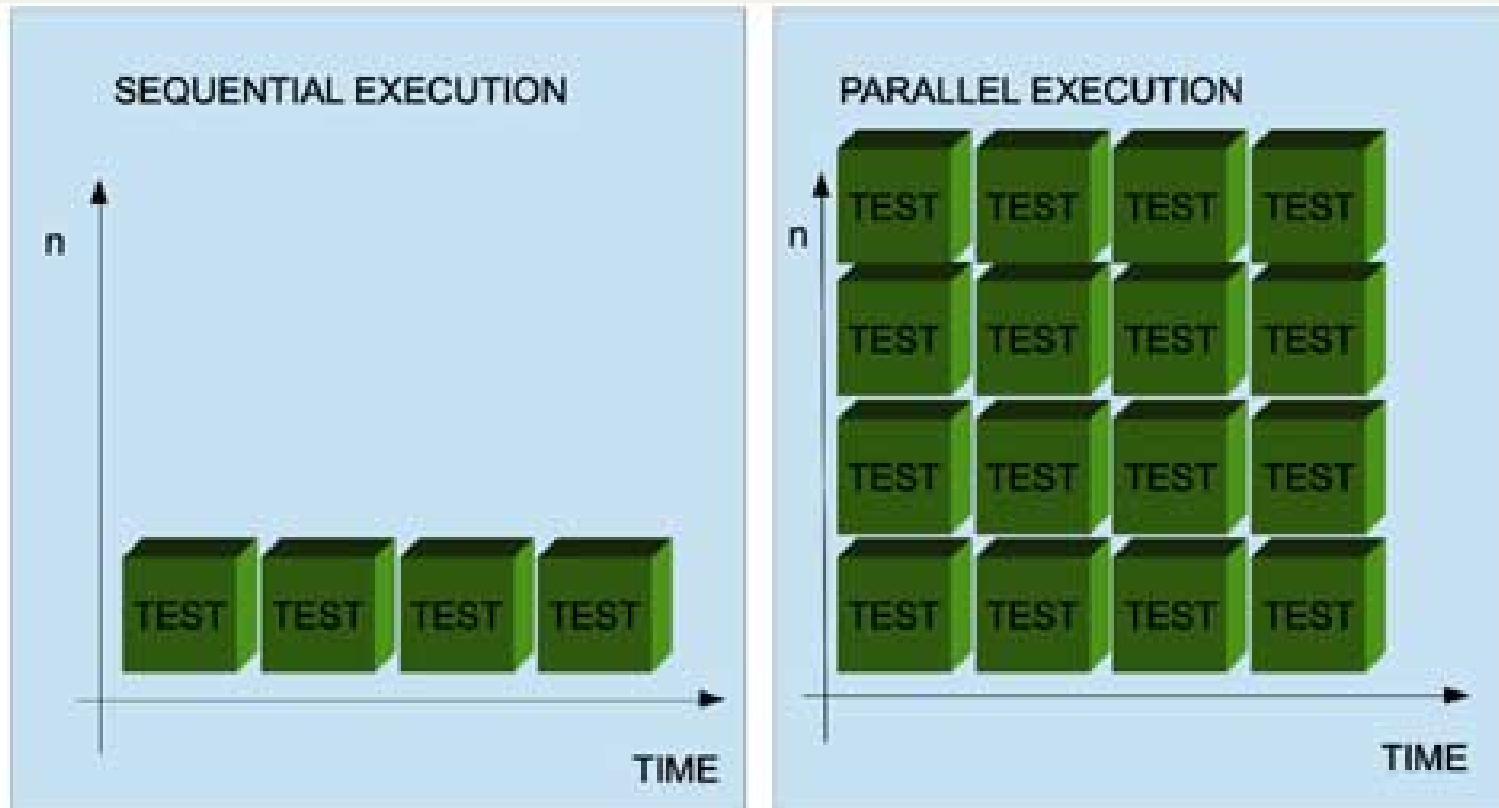
# PROS AND CONS

- Natural fit for pytest fixtures
- Much easier data creation
- People create separate data entries for each test "automatically"
- Need to maintain data creation factories
- Potentially slower (not sharing data across tests)





# HOW TO MAKE TESTS FASTER



Source: <http://www.methodsandtools.com/tools/selenium.html>



# EXECUTE TESTS IN PARALLEL WITH PYTEST

```
$ pip install pytest-xdist  
$ python -m pytest -s -vvv -n 4 tests/acceptance
```

- ✔ **BIZCORE-490** Fix high number of failures when running tests in parallel
- ✔ **BIZCORE-491** Fix end\_campaign test
- ✔ **BIZCORE-492** Fix special hours related tests
- ✔ **BIZCORE-493** Fix issue with test collection because of invalid token tests
- ✔ **BIZCORE-499** Fix question and answer parallel test execution
- ✔ **BIZCORE-500** Fix notification settings parallel test execution
- ✔ **BIZCORE-520** Enable parallel test execution for all acceptance tests





# EXECUTE TESTS IN PARALLEL WITH PYTEST

- ✓ **BIZCORE-529** Investigate tests failure
- ✓ **BIZCORE-530** Refactor all editing tests in detail acceptance tests
- ✓ **BIZCORE-669** Fix flaky detail acceptance tests related to service areas
- ✓ **BIZCORE-711** Fix flaky detail acceptance test due to bio photo
- ✓ **BIZACT-1058** Fix flaky acceptance tests related to temporary closures





# TAKEAWAYS

- Use fixture factories for **faster development** and more correct test data
- Convert tests for **test isolation and repeatability**
- Take advantage of it by executing tests in **parallel**





## OTHER TALKS BY YELPERS

"Write more decorators (and fewer classes)"  
by Antonio Verardi; Tuesday, 10:30, Anfiteatro 2

"Teeing up Python: Code Golf"  
by Lee Sheng; Wednesday, 12:10, PyCharm Room





[fb.com/YelpEngineers](https://fb.com/YelpEngineers)



[@YelpEngineering](https://@YelpEngineering)



[engineeringblog.yelp.com](https://engineeringblog.yelp.com)



[github.com/yelp](https://github.com/yelp)



# QUESTIONS?

sjaensch@yelp.com / @s\_jaensch

[https://github.com/sjaensch/faster\\_end\\_to\\_end\\_tests\\_talk.git](https://github.com/sjaensch/faster_end_to_end_tests_talk.git)

